



IEEE EMBC'10

August 31 – September 4, 2010
Buenos Aires, Argentina



CONFERENCE CHAIR

Ricardo L. Armentano
Favaloro University,
Argentina

CONFERENCE CO-CHAIR

Donna Hudson
University of California,
San Francisco, USA

PROGRAM CHAIR

Jorge E. Monzon
Universidad Nacional del
Nordeste, Argentina

PROGRAM CO-CHAIR

James L. Patton
University of Illinois at
Chicago, USA

INTERNATIONAL PROGRAM CHAIR

Metin Akay
Arizona State University,
USA

IMPORTANT DATES

January 22, 2010

Workshops /Symposia Proposal

April 1, 2010

Four Page Paper Submission

June 1, 2010

Notification of Acceptance

June 19, 2010

Author Final Submission

June 25, 2010

Exhibition Booth/Table
Reservation

July 28, 2010

Early Registration/Hotel
Reservation

“Merging Medical Humanism and Technology”

The 32nd Annual International Conference of the IEEE Engineering in Medicine and Biology Society (EMBC'10) will be held from August 31 to September 4, 2010 at the Sheraton Buenos Aires Hotel and Convention Center in Buenos Aires, Argentina.

The general theme of EMBC'10 is “Merging Medical Humanism and Technology,” covering a broad spectrum of topics from biomedical and clinical engineering and physics to medical and clinical applications. The conference program will consist of invited plenary lectures, symposia, workshops, invited sessions, oral and poster sessions of unsolicited contributions. All papers will be peer reviewed and accepted papers of up to 4 pages will appear in the Conference Proceedings and be indexed by PubMed and Medline. Proposals for organized sessions and submissions are invited in the following themes.

1. Biomedical Signal Processing
2. Biomedical Image and Image Processing
3. Bioinstrumentation: Sensors, Micro, Nano and Wearable Technologies
4. Bioinformatics and Computational Biology; Systems Biology, Modeling Methodologies
5. Cardiovascular and Respiratory Systems Engineering
6. Neural Engineering, Neuromuscular Systems and Rehabilitation Engineering
7. Molecular and Cellular Biomechanics, Tissue Engineering, Biomaterials
8. Bio-Robotics, Surgical Planning and Orthopedics Biomechanics
9. Therapeutics and Diagnostic Systems, Devices and Technologies, Clinical Engineering
10. Healthcare Information Systems, Telemedicine
11. Technology Commercialization, Education, Industry and Society

For more details, visit the EMBC'10 Website:

<http://embc2010.embs.org/>





CALL FOR PAPERS ISBI 2010

14-17 April 2010 • Rotterdam • The Netherlands

General Chair

Wiro Niessen
Erasmus Medical Center &
Delft University of Technology
The Netherlands

Program Chair

Erik Meijering
Erasmus Medical Center
The Netherlands

Plenaries

Zhi-Pei Liang
University of Illinois at
Urbana-Champaign
USA

Tutorials

Jelena Kovačević
Carnegie Mellon University
USA

Special Sessions

Boudewijn Lelieveldt
Leiden University Medical Center
The Netherlands

Publications and Publicity

Daniel Rueckert
Imperial College London
United Kingdom

Industrial Liaison

Max Viergever
University Medical Center Utrecht
The Netherlands

American Liaison

Atam Dhawan
New Jersey Institute of Technology
USA

Local Arrangements

Désirée de Jong &
Petra 't Hart-Assems
Erasmus Medical Center
The Netherlands

The **IEEE International Symposium on Biomedical Imaging (ISBI)** is the premier forum for the presentation of technological advances in theoretical and applied biomedical imaging. ISBI 2010 will be the seventh meeting in this series. The previous meetings have played a leading role in facilitating interaction between researchers in medical and biological imaging. The 2010 meeting will continue this tradition of fostering crossfertilization among different imaging communities and contributing to an integrative approach to biomedical imaging across all scales of observation.

ISBI is a joint initiative of the **IEEE Engineering in Medicine and Biology Society (EMBS)** and the **IEEE Signal Processing Society (SPS)**. The 2010 meeting will feature an opening morning of tutorials, followed by a scientific program of plenary talks, special sessions, and oral and poster presentations of peer-reviewed contributed papers.

Confirmed plenaries

- Richard Ehman (Mayo Clinic, USA) on new clinical imaging technologies
- Clemens Löwik (LUMC, The Netherlands) on molecular imaging and applications
- Jason Swedlow (University of Dundee, UK) on challenges in bioimage informatics
- Milan Sonka (University of Iowa, USA) on challenges in biomedical image analysis

High-quality papers are solicited containing original contributions to the mathematical, algorithmic, and computational aspects of biomedical imaging, from nano- to macro-scale. Topics of interest include image formation and reconstruction, computational and statistical image processing and analysis, dynamic imaging, visualization, image quality assessment, and physical, biological, and statistical modeling. Papers on molecular, cellular, anatomical, and functional imaging modalities and applications are welcomed. All accepted papers will be published in the proceedings of the symposium and will be available online through the **IEEE Xplore** database.

Important dates

Deadline for submission of 4-page paper:
Notification of acceptance/rejection:
Submission of final accepted 4-page paper:
Deadline for author registration:
Deadline for early registration:

November 2, 2009
January 15, 2010
February 15, 2010
February 15, 2010
March 1, 2010

Venue

Congress Center
"De Doelen"
Rotterdam
The Netherlands



Further information is available at <http://www.biomedicalimaging.org/2010/>



IEEE



IEEE

Signal Processing Society



A photograph of a smiling man with a grey beard, wearing a light green short-sleeved button-down shirt, standing in a kitchen. He is looking towards the camera and has his hands clasped in front of him. The kitchen features white cabinetry, a toaster on the counter, and a green tiled backsplash. The lighting is warm and indoor.

everyday
better

It's why we're making our company better, every day.

At Boston Scientific, we're committed to help make life better for patients. That's why we've created a culture of quality designed to set new standards of excellence for ourselves and our industry. It's why we work every day to improve everything that can make our devices more effective, more innovative and more powerful in your hands. We know that's how we can help you give your patients back their everyday lives.



See how at bostonscientific.com

© 2007 Boston Scientific Corporation and its affiliates. All rights reserved.

**Boston
Scientific**

Delivering what's next.™

Welcome to the Twin Cities the hub of biomedical engineering



Taner Akkin
Biomedical Optics and
Imaging



Shai Ashkenazi
Bioimaging, Instrumentation



Victor Barocas
Computational
Biomechanics and
Biotransport



John Bischof
Bioheat and Mass Transfer,
Thermophysics and
Biophysics



Bin He
Biomedical Imaging,
Neuroengineering



Hugh Lim
Neural Prostheses, Auditory
Neuroscience



Tay Netoff
Neuroscience, Epilepsy
Research



David Odde
Mitosis, Cell Growth,
Microtubule Dynamics



Jonathan Sachs
Cell Membrane Biophysics



Wei Shen
Biomaterials, Tissue
Engineering



Ronald Siegel
Drug Delivery, Hydrogels,
MEMS



Alena Talkachova
Cardiac Electrophysiology



Bob Tranquillo
Cardiovascular and Neural
Tissue Engineering



Chun Wang
Biomaterials, Drug and Gene
Delivery

The Institute for Engineering in Medicine is **Driven to Discover**.SM



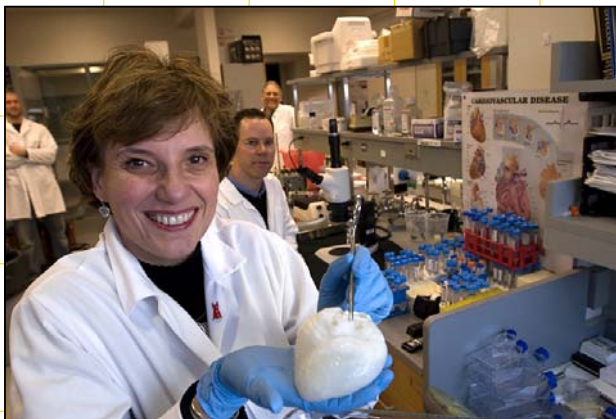
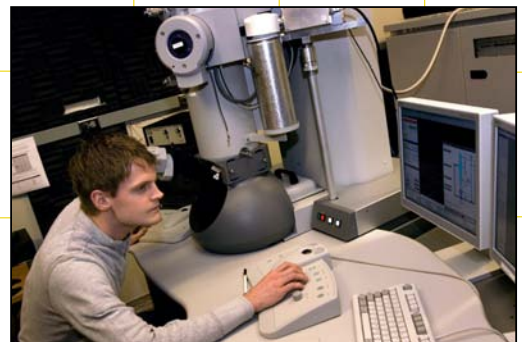
The **Institute for Engineering in Medicine** is an interdisciplinary research organization at the **University of Minnesota** that leverages the collective expertise of Medical School and engineering faculty members toward highly collaborative, goal-oriented research to provide engineering solutions to medical problems.

Institute for Engineering in Medicine

Where medicine meets technology for tomorrow's innovation

Whether it's providing seed funding for basic biomedical research, developing medical devices, or strengthening relationships between the University of Minnesota and the medical device industry...

The Institute for Engineering in Medicine is making a difference.



UNIVERSITY OF MINNESOTA

*Institute for Engineering
in Medicine*

Driven to DiscoverSM

www.iem.umn.edu

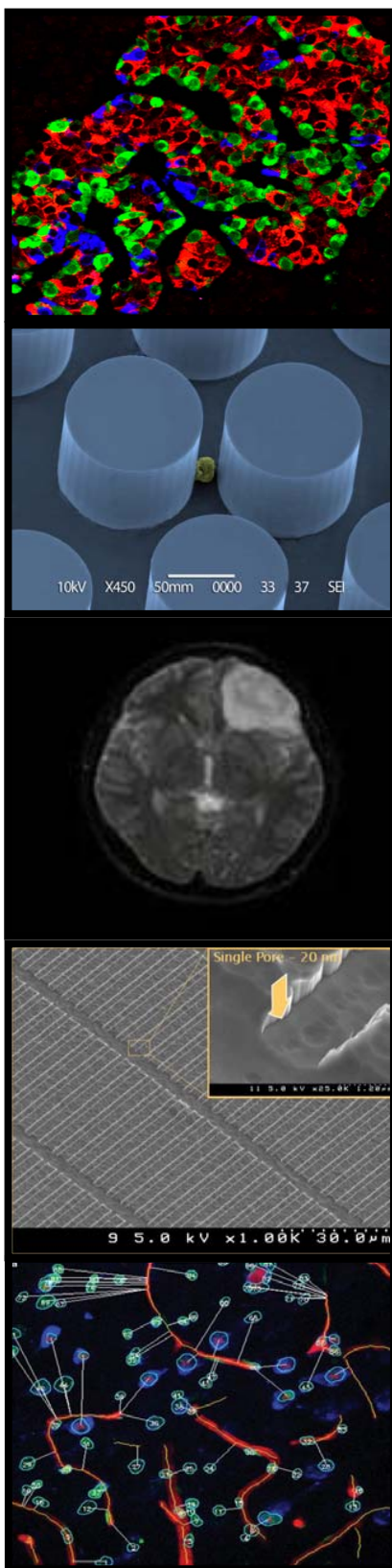


Medtronic

Beyond Imagination

At Medtronic, we're changing what it means to live with chronic disease. We're creating therapies that help patients do things they never thought possible. Seeing our work improve lives is a powerful motivator. The more we do, the more we're driven to push the boundaries of medical technology.

To learn more about Medtronic, visit medtronic.com



National Institute of Biomedical Imaging and Bioengineering

*Improving health care by
leading the development
and accelerating the
application of biomedical
technologies*

www.nibib.nih.gov



“We are responsible to the communities in which we live and work and to the world community as well.”

Our Credo

Johnson & Johnson

*because
we would all
like to see
a heart attack
coming from
a mile away.

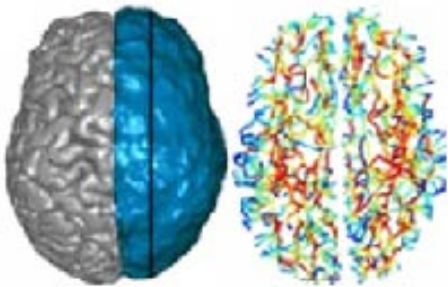


Philips Discovery to Treatment solutions can save precious time for someone suffering from a heart attack by measuring and transmitting vital signs from the ambulance directly to the hospital. By investing time in understanding people's needs, our innovations have enhanced the quality of care in over 100 countries worldwide. There's more where that came from at www.philips.com/because

PHILIPS
sense and simplicity

Center for Neuroengineering University of Minnesota

The **Center for Neuroengineering** was established to enhance neuroengineering research at the **University of Minnesota** and to foster collaborations among University faculty and between faculty and industrial partners. Bridging neuroscience and engineering, neuroengineering is an emerging field that translates research discoveries into neuro-technologies that provide new, powerful tools for neuroscience research, and lead to enhanced patient care. Visit the center's home page at www.cne.umn.edu.



UNIVERSITY OF MINNESOTA

Translational Neuroscience Scholars Program Faculty Positions in Neuroengineering

The Institute for Translational Neuroscience (ITN) at the University of Minnesota, is seeking to fill multiple tenure-track or tenured positions to enhance its research strengths in neuroengineering. The Institute is interested in the study of mechanisms of neural systems using engineering methods, with these studies translating into potential clinical applications. Areas of specific interest include, but are not limited to, neural sensing and interfacing, neural stimulation and modulation, neural prostheses, neural imaging, neural modeling, and neural devices.

Successful candidates will be affiliated with the Center for Neuroengineering, and will have their tenure home in an academic department, such as the Department of Biomedical Engineering, Department of Electrical and Computer Engineering, etc. Such candidates are expected to establish a vigorous, externally-funded research program, have a genuine commitment to undergraduate and graduate education, and to collaborative program development.

The requirements for these positions include an earned doctorate in an appropriate discipline at the time of the appointment and outstanding academic and research records. Rank and salary will be commensurate with the qualifications and experience of the candidate.

Candidates with strong engineering background and demonstrated research expertise in neuroengineering are encouraged to apply. Submit applications, including curriculum vitae, detailed statement of research and teaching interests, and names of three references to ITN Neuroengineering Faculty Search Committee at cne@umn.edu.

The University of Minnesota is committed to diversifying its faculty and encourages applications from women and minorities.

The University of Minnesota is an equal opportunity educator and employer.



Hollingsworth & Funk

INTELLECTUAL PROPERTY LAW

neuro-stimulation

nanotechnology

large area electronics

lasers

geophysics

automotive

alternative energy

solar cells

opto-

electronics

communications

optics

fuel cells

RFID

solid state memory

bioinformatics

networking

cleantech

disk drives

software

sensors

gaming

MEMS

biomass energy

navigational
technology

Protecting Your Investment In Innovation

- establishing collaborative, long-term relationships with clients from start-ups to Fortune 100 companies
- thoughtfully crafted IP that achieves your U.S. and international business objectives
- patent preparation and prosecution, opinions, landscaping, design arounds, product clearance, M&A IP due diligence
- PATENTEYE™ – our proprietary software for patent portfolio management and competitor analysis
- sophisticated legal services with Midwest affordability

Protecting your IP requires attorneys who understand your business objectives just as thoroughly as your technology. Our attorneys combine years of legal and industry experience to develop comprehensive strategies that maximize your IP investment.

control systems

computer architecture

cardiac devices

touch screens

semiconductors

biomedical systems

8500 Normandale Lake Blvd, Suite 320 • Minneapolis, MN 55437 • 952.854.2700 • hfiplaw.com

Bridge the gap between theory and practice.

Kinea Design provides research, development and engineering design services that improve productivity and quality of life for people and accelerate research.

Our seasoned, multidisciplinary team of engineers, scientists, and clinicians collaborate closely with you to transform ideas into high-impact innovations that align user needs and business goals. From biomedical instruments to industrial Intelligent Assist Devices, we bring the expertise, cross-industry experience and deep design process knowledge to solve your most complex challenges.

Our track record of delivering the right solution, on time and on budget is why John Hopkins Applied Physics Lab, Rehabilitation Institute of Chicago, Northwestern University, The Methodist Hospital and others have relied on Kinea Design for strategic project and research needs.

kineadesign

We make ideas work.

Engineering | Product Development | Prototyping | R&D Partnerships

Capabilities: human-interactive robotics, haptic interfaces, sensors, control systems, mechatronic systems, electro-mechanical design, engineering analysis, research device development & services

Visit us to learn more. Booth #10. www.kineadesign.com.

Award Winning Noise & Vibration Reduction & Control Solutions

- Plant Assessment & Solutions
- In-house & On-site Testing
- Field Data Collection & Analysis
- Prototype & Product Assessments
- Computer Aided Modeling & Design
- Static & Dynamic Analysis
- Finite Element Analysis (FEA)
- Machinery Testing & Diagnostic
- Structural Measurements & Assessments
- Noise Measurements Analysis & Solutions



QUALITY
RESEARCH
DEVELOPMENT
& CONSULTING

952.556.5205 QRDC.com

Design of Medical Devices Conference

April 13-15, 2010

The University of Minnesota's Institute for Engineering in Medicine's Medical Devices Center, the Institute of Technology, and the Academic Health Center present the 9th annual Design of Medical Devices Conference. The conference will be held **April 13-15, 2010** at the Radisson University Hotel in Minneapolis, Minnesota, adjacent to the University of Minnesota campus.

The three-day conference consists of multiple scientific poster sessions and three days of technical/scientific sessions with topics such as:

- Live Surgery
- Cardiovascular Engineering
- Neuroengineering
- Nano/MEMS Devices
- Medical Electronics
- Technology Assessment
- Human Factors
- Orthopedics
- Computational Modeling of Anatomy/Devices
- Surgical Simulators
- Health Informatics
- Surgical Tools
- Government Funding
- Legal/Regulatory Issues
- Innovation and Design
- Tissue Engineering
- Medical Product Design

Call for Abstracts

The Design of Medical Devices Conference seeks original papers that demonstrate new technologies and applications in the field of medical device design. The paper should present an unbiased description of an experiment, product or business method related to medical devices. Highly rated papers will be published in the ASME Journal of Medical Devices (<http://www.asme.org/>)

Submission information and author instructions are on the Call for Abstracts section of the conference web site (www.dmd.umn.edu)

Sponsorship Opportunities are Available

Contact Jenny Holden (holden@me.umn.edu) for details.

THE DESIGN OF MEDICAL DEVICES
DMD
CONFERENCE
UNIVERSITY OF MINNESOTA
Driven to DiscoverSM

w w w . d m d . u m n . e d u



Whitaker
International Fellows And Scholars
Program

**Grants For
Biomedical Engineering
Study or Research Abroad**

The **Whitaker Program** provides young biomedical engineers the opportunity to expand their geographic and academic horizons

Potential activities to pursue overseas include:

- conducting research at an academic institution
- interning at a policy institute
- establishing ties between home and host institutions
- pursuing post-doctoral work

For more information, including program details, application requirements, and the online application, visit our website.

**DEADLINE:
January 25, 2010**

www.whitaker.org

INSTITUTE OF
INTERNATIONAL
EDUCATION

Institute of International Education
809 United Nations Plaza
New York, NY 10017

ANNUAL REVIEWS

A Nonprofit Scientific Publisher

Annual Reviews has offered comprehensive, timely collections of critical reviews written by leading scientists since 1932. Annual Reviews journals review 37 focused disciplines within the Biomedical, Life, Physical, and Social Sciences.

Consistently ranked within the top ten of journals for their disciplines as indexed by the ISI® Journal Citation Reports (JCR®), Annual Reviews journals are among the most highly cited in scientific literature.

INSIGHTFUL RESEARCH IN BIOMEDICAL ENGINEERING STARTS WITH ANNUAL REVIEWS

Access online now via your
institution's subscription:
<http://bioeng.annualreviews.org>

Annual Review of Biomedical Engineering

VOL. 11, AUG. 2009 | AVAILABLE ONLINE & IN PRINT

[HTTP://BIOENG.ANNUALREVIEWS.ORG](http://BIOENG.ANNUALREVIEWS.ORG)

Editor:

Martin L. Yarmush

Harvard Medical School

Associate Editors:

Kenneth R. Diller

University of Texas, Austin

Mehmet Toner

Harvard Medical School

Annual Review of Biomedical Engineering, in publication since 1999, covers the significant developments in the broad field of biomedical engineering, including biomechanics, biomaterials, computational genomics and proteomics, tissue engineering, biomonitoring, health care engineering, drug delivery bioelectrical engineering, biochemical engineering, and biomedical imaging topics.

This journal is ideal for all engineers, life scientists, and physicians, who seek topical reviews in areas of vital significance to scientific discovery and patient care.

The Annual Review of Biomedical Engineering is ranked #1 by Impact Factor of the 51 Biomedical Engineering journals assessed by the ISI® Journal Citation Reports (JCR®).

Personal copies available at a reduced rate. Institutional site license options available. Contact Annual Reviews for details.

